

IMPORTANT NEWS



New Workers' Compensation Self Insured Group Forming

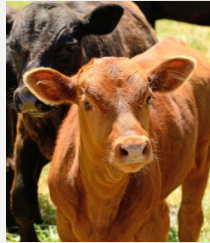
What are the benefits of being a member in a Self Insured Group?

- No cost, proactive safety services to support your safety plan and employee education
- Aggressive claims management, getting workers back to work and improving productivity
- More control on insurance costs and procedures
- Turning 'insurance company profits' into 'dividends to your company'
- Keeping insurance dollars more local as compared to State Fund

The New Mexico Cattle Growers' Association (NMCGA) has partnered with Pro Group and is sponsoring the establishment of a new Self Insured Group (SIG) for New Mexico Workers' Compensation. NMCGA's SIG will determine its own operating rules such as who gets admitted, who is denied, and more.

What is a Self Insured Group?

Self Insured Groups are a cost effective, comprehensive method of minimizing losses and reducing costs of workers' compensation claims. When it comes to protecting your business and your employees for workers' compensation, self insured groups continue to stand out as the most cost effective and sound solution.



Why should I consider joining a Self Insured Group?

A well maintained and strong self-insured group gives employers the advantage of lower, long term and stable rates. Being in a self insured group provides flexibility and gives the members a voice in how your program can be run.



Self-insured groups include strict underwriting guidelines, strong risk management, loss control, comprehensive safety services with claims oversight and aggressive claims handling.

How can I find out more about the New Self Insured Group?

We would like to extend an invitation to you and ask that you join us for an exploratory meeting to discuss the advantages and risks of this type of plan. Everything you need to know and how to join will be presented. We hope to see you there - the meeting will be held on **(Meeting Date Here)** at the **(Meeting Location Here)** and starts at **(Meeting Time Here)**.



You or your representatives are encouraged to attend the meeting and to complete the survey that will be provided. The results of this group could provide a great opportunity for you and your employees!

For more information and to confirm your attendance at the meeting please contact **(Name)** at the NMCGA office
Phone (505) 247-0584 or
Email: nmcga@nmagriculture.org

Take Control of Your Workers' Comp

Are you ready to make the change in your Workers' Compensation coverage? We are confident that you will enjoy increased benefits. The entire program will be managed and administered by Pro Group, a well-known Workers' Comp Administrator that understands how to make this group plan work.



You can learn more about Pro Group by visiting their website: WWW.PGMNV.COM



New Mexico Cattle Growers' Association

P.O Box 7517
2231 Rio Grande Blvd. NW
Albuquerque, NM 87194
Phone: (505) 247-0584
Email: nmcga@nmagriculture.org
Web: <http://nmagriculture.org>